

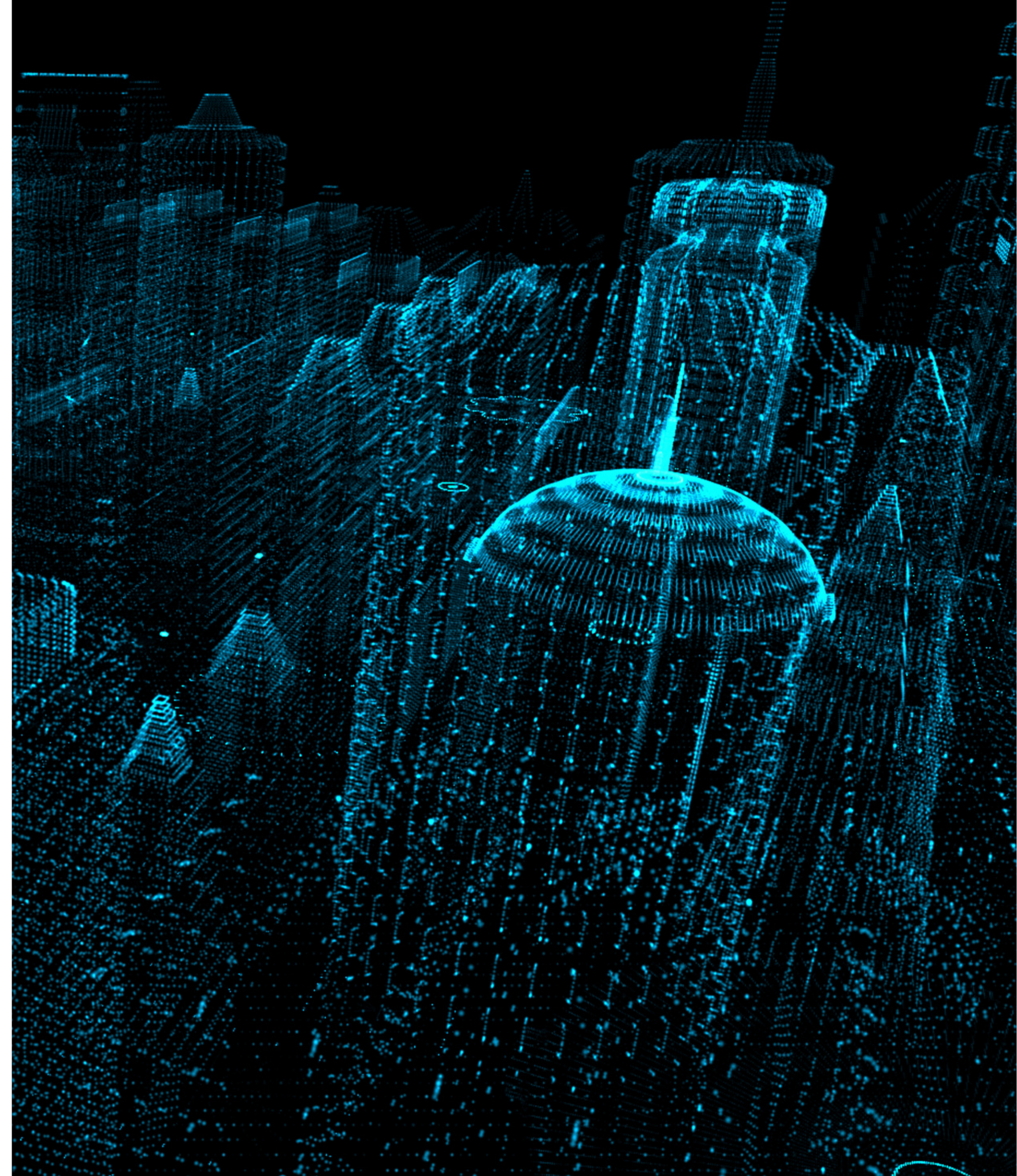
# Special London Market Cyber Insurance Roundtable

## Polling Results

Supported by



**CITY UNIVERSITY  
LONDON**





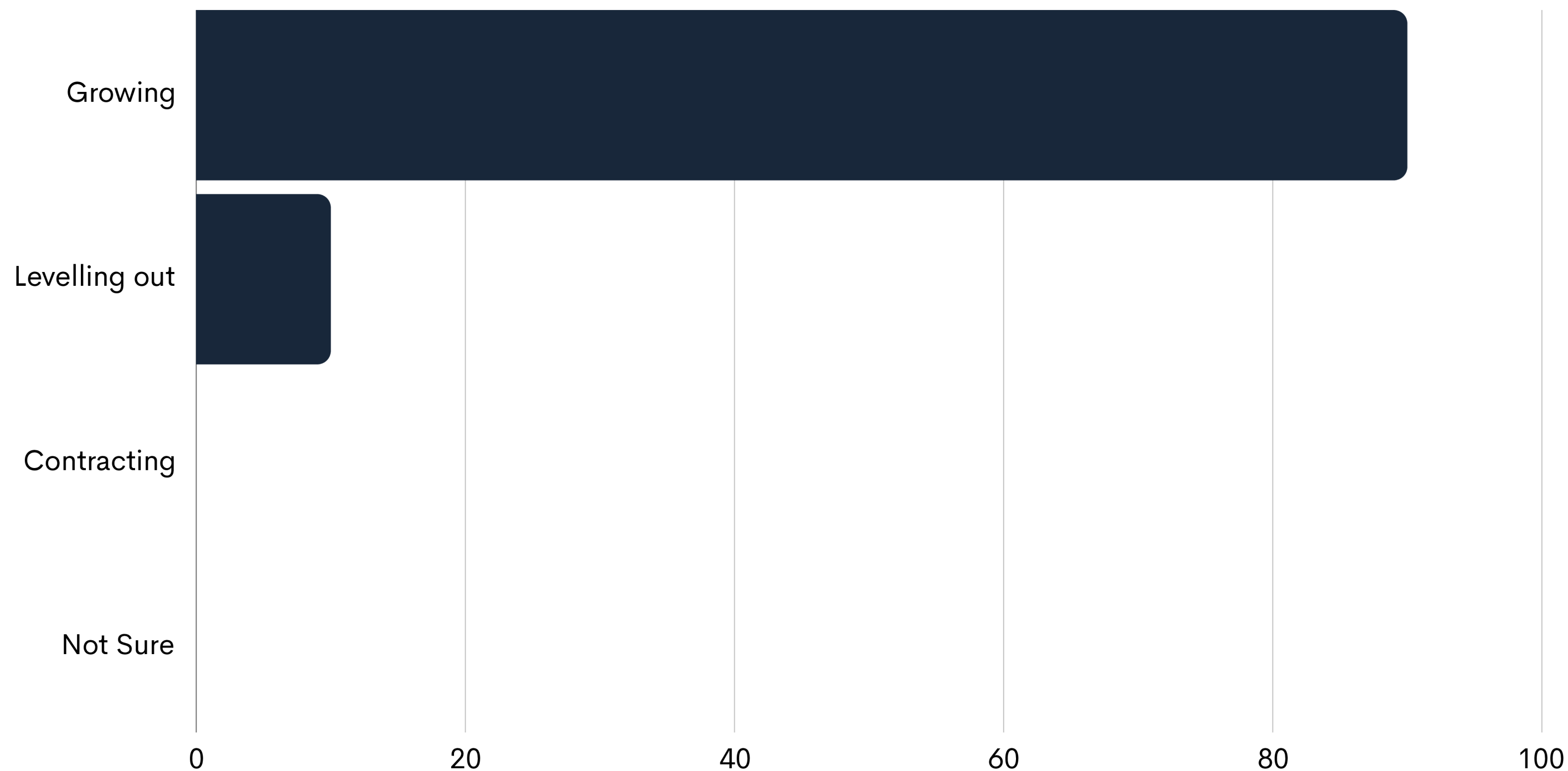
# What is the key change you've seen in the cyber insurance Market over the last 12 months?



**Supported by**



# In the cyber class of business, is your client base growing, contracting, or not sure?



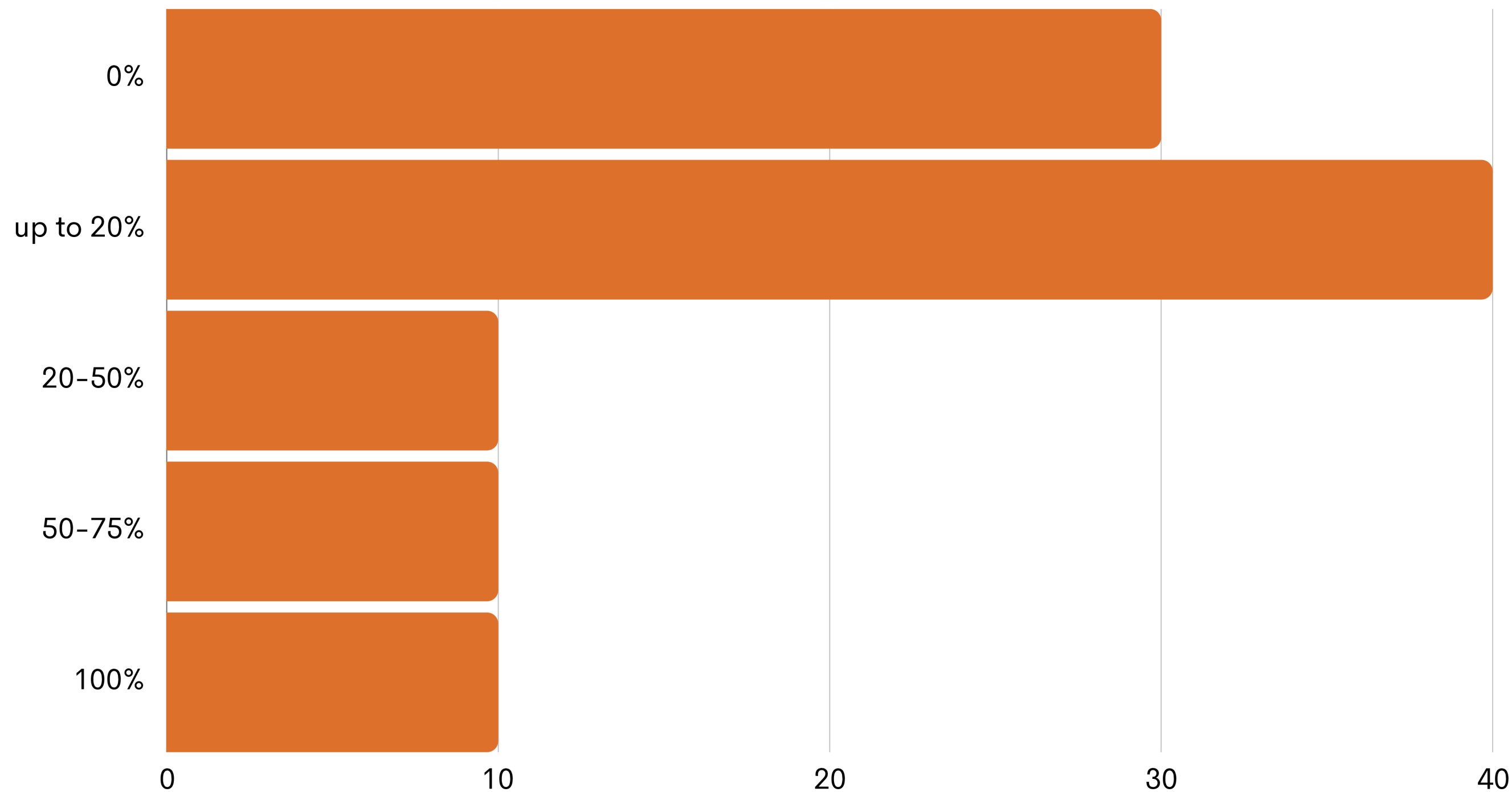
**Supported by**



**CITY UNIVERSITY  
LONDON**



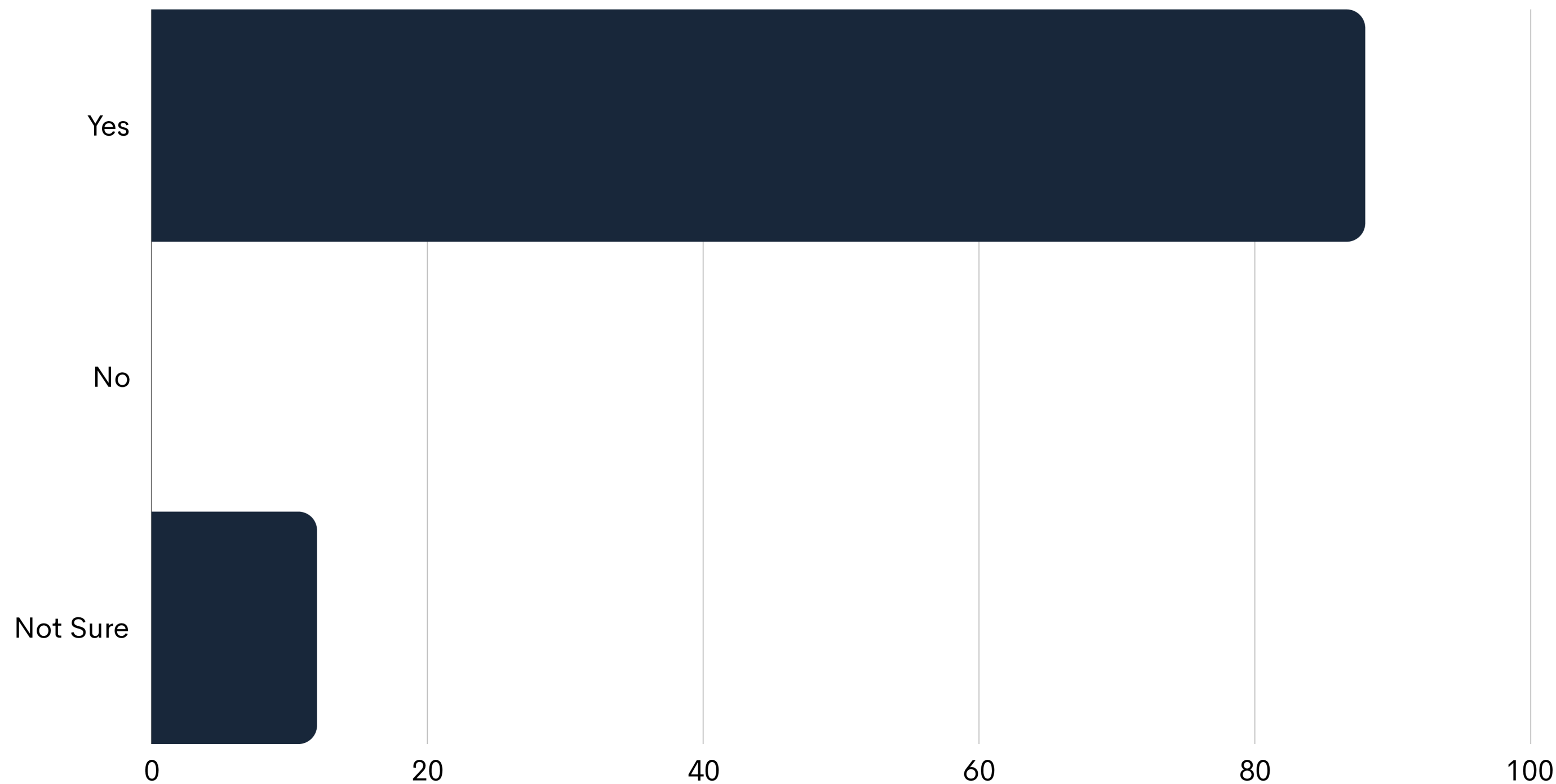
# What percentage of your cyber insurance customers are SMEs?



**Supported by**



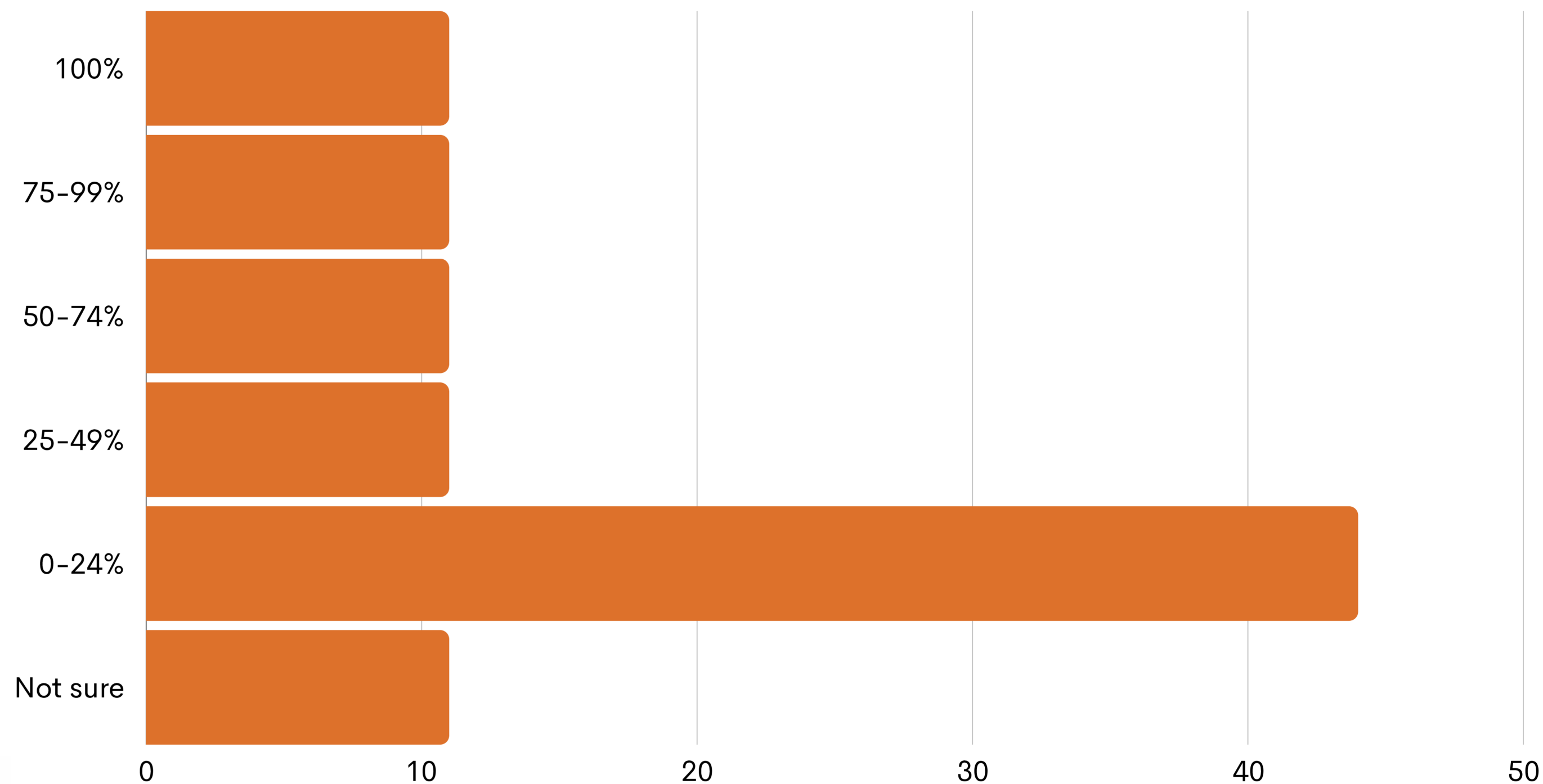
# Have you seen growth in demand for cyber insurance from the SME sector in the last 4 years?



**Supported by**



**Roughly speaking, based the risks you handle, what percentage are accepted (without specific conditions/express warranties) etc.?**



**Supported by**



# What do you perceive as the biggest barrier to entry for SMEs in purchasing cyber insurance?



**Supported by**





Visit our website  
for upcoming events

[LMForums.com](https://LMForums.com)

